



SALIVA COLLECTION INSTRUCTIONS: SALIMETRICS INFANT'S SWAB (SIS) (Item No. 5001.08)

Approved for collection of saliva for analysis of cortisol, alpha-amylase, chromogranin A, cotinine, C-reactive protein, testosterone, SlgA, & DNA

The Salimetrics Infant's Swab is recommended for collecting saliva samples from infants younger than six (6) months. It may also be used for adults when choking risk must be considered. Under ideal circumstances, collecting saliva for 20-30 seconds yields on average >200 µL of useable sample.

CAUTIONS:

- Use for infants under 6 months
- **Use only as directed**
- A copy of this caution note or the instruction sheet must be distributed to each device user.
- This device is not a toy and is intended for collection of saliva.
- Adult assistance and supervision is **required** during use.
- Inspect device for cuts or tears. **DO NOT USE** if cuts or tears are present.
- When not used as directed these devices may represent a choking hazard for children.
- Store out of the reach of children.

Supplies Needed

- ⇒ Salimetrics Infant's Swab (Item No. 5001.08) [dimensions 4.5 x 90 mm]
- ⇒ Swab Storage Tube (Item No. 5001.05) [dimensions 18 x 97 mm]
- ⇒ 3 cc or 5 cc syringe (optional) (Item No. 5015.02)
- ⇒ Bar-coded labels (Item No. 5007.00)
- ⇒ Scissors (optional)
- ⇒ 4" swab storage tube boxes (Item No. 5023.00) [dimensions 134 x 134 x 105 mm]

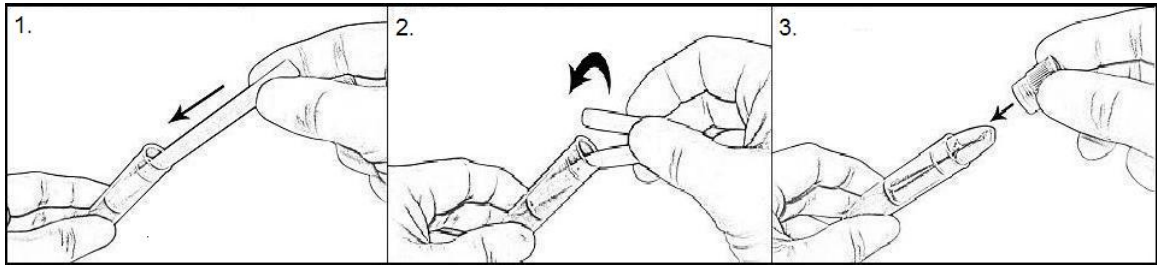
Sample collection

1. Peel back outer package, leaving crimped end attached to the SIS. **Do not use swab if cuts or tears are present.**
2. Securely hold onto the crimped end of the swab and try to place the other end **under the child's tongue**. With infants it may only be possible to collect pooling saliva (often at the corners of the mouth). Re-introduce as needed until the lower third (approx. 1in/2.5 cm) of the swab is saturated (approx. 20-30 seconds total time).

Please Note:

- Localized secretions from specific areas in the mouth can affect results for analytes such as SlgA and alpha-amylase. **We therefore recommend that the swab should not be moved around in the mouth.**
 - SlgA and alpha-amylase levels are influenced by the saliva flow rate, which may be difficult to estimate when collecting with this device, due to its rapid absorption characteristics.
3. Fully peel back the outer package to remove the swab for storage.
 4. Immediately after collection, use one of the following procedures for recovering the sample:
 - a. **If storing swab in swab storage tube for later centrifugation in lab**
 1. Remove the cap from the swab storage tube (SST). Insert the **saturated** end of the swab into the tube insert at the top of the SST.
 2. Fold over the dry end of the swab into the tube insert as well.

- Recap SST tightly. **Note:** Do not throw away any parts of the tube assembly.



b. If using syringe for extraction in the field

- Remove plunger from 3 cc or 5 cc syringe.
- Insert the swab into the syringe barrel, **saturated end first**.
- Cut off the protruding dry end of the swab, leaving saturated end inside the syringe barrel (or double dry end over and insert into syringe barrel).
- Replace plunger into syringe and squeeze the swab to express the saliva into the storage tube.
- Cap tube tightly. You may discard swab, upper chamber insert, and plunger. (However, if the sample may be used for DNA analysis at some point, the swab and insert should be saved.)

Note: The compression method recovers slightly less saliva volume from the swab than centrifugation technique, but it allows the volume recovered on the first attempt to be assessed. The procedure may be repeated as necessary until sufficient volume has been collected.

- For samples that will be sent to Salimetrics Testing for analysis, label the exterior of the swab storage tubes with the identifying (bar-coded) cryo-labels that are supplied. **Do not use regular paper labels – they will fall off when placed in the freezer.**

Sample handling and processing

- Immediately after collection, storage tube should be frozen (-20 to -80°C). If freezer is not immediately available, refrigerate samples (2-8°C) or place in cooler containing ice packs. **Freezing samples within 2 hours of collection is recommended.**
- If processing samples in-house prior to freezing, centrifuge the storage tube for 15 minutes at 3000 to 3500 rpm (1800 g) to extract the saliva. Remove the upper chamber insert and discard, recap tube and proceed with freezing.
- It is recommended that tubes be organized into storage boxes (7x7 grids, 49 tubes) before shipping.

NOTES:

- It is important that saliva collected using the Infant's Swab (SIS) does not evaporate. Make sure vial cap is closed properly and sample is frozen **within two hours** after collection.
- If samples are to be stored for greater than three (3) months after collection we recommend centrifuging (or alternate squeezing technique) **prior** to freezer storage to lessen the chance of evaporation.
- We discourage using the SIS collection method for adults unless other options are impractical (e.g. dementia patients). Please contact the Salimetrics technical support staff for recommendations before beginning your study.